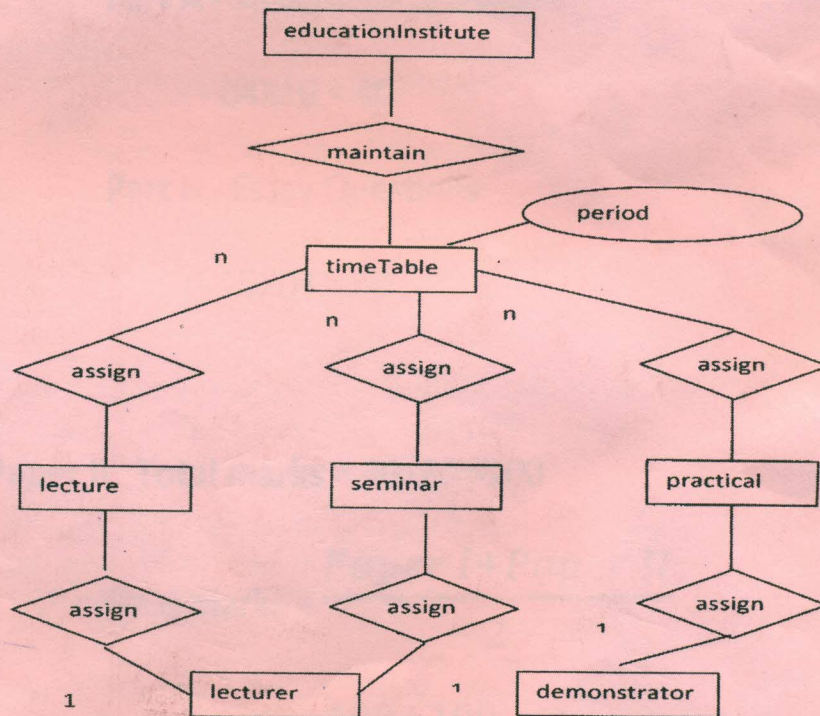




Department of Examination - Sri Lanka
G.C.E. (A/L) Examination - 2016

20 – Information & Communication
Technology

Marking Scheme



This has been prepared for the use of marking examiners. Some changes would be made according to the views presented at the Chief Examiners' meeting.

20 - Information & Communication Technology

Distribution of marks

Paper I

Time Duration 02 hours

Questions 50

Total Marks 50X2 = 100

Paper II

Time Duration 03 hours

Part A - Structured Questions

04X10 = 40

Part B - Essay Questions

15X04 = 60

Paper II Total marks = 40+60 =100

Final marks = $\frac{\text{Paper I} + \text{Paper II}}{2}$

= $\frac{100+100}{2}$ =100

